

Mid-Carolina Gun Club

OFFICIAL RULES AND SAFETY MANUAL
17th EDITION – 2025

**THE USE OF EYE & EAR
PROTECTION IS MANDATORY FOR
ALL PERSONS ON OR ADJACENT TO
ACTIVE RANGES**

Club Member: _____

Club Combination: _____

Main Gate Emergency Code: _____ *

RV Park Emergency Code: _____

Revised: June 5, 2025

MID-CAROLINA GUN CLUB
Rules and Safety Manual

FORWARD

CARDINAL RULES OF THE CLUB

VIOLATION OF, BUT NOT LIMITED TO, THE FOLLOWING RULES MAY RESULT IN LOSS OF CLUB PRIVILEGES, REPRIMAND, SUSPENSION OR EXPULSION from the Club pursuant to Article VIII of the Club's By-laws:

1. Revealing the **CLUB COMBINATION** or giving or loaning **GATE CARDS** to any nonmember, family member or a member not in good standing is **STRICTLY FORBIDDEN**
2. Failure to **SWIPE GATE CARD AND/OR SIGN-IN LEGIBLY**, AND LIST INTENDED PURPOSE OF VISIT. If you have guests, add "Guests" after your name
3. Failure to **PROPERLY** and **LEGIBLY** complete a SHOOT TICKET and/or **FAILURE TO PAY** for services or **FAILURE TO IMMEDIATELY FOLLOW OMITTED PAYMENT PROCEDURE**
4. Failure to use **EYE and EAR PROTECTION** or or adjacent to an active range
5. **VANDALISM, DESTRUCTION, MISAPPROPRIATION OR THEFT OF CLUB PROPERTY**, intentional and unintentional, damage of target frames, or personal property
6. **HANDLING A FIREARM** when not at a designated firing point or **HANDLING A FIREARM** when anyone is **DOWNRANGE**.
7. **POINTING A WEAPON**, regardless of loaded condition, at anyone or anything other than a designated target
8. **INDISCRIMINATE FIRING** of any gun on any range
9. Involvement or participation in **ILLEGAL ACTIVITY** on club grounds
10. **REPEATED** RULES or SAFETY violations
11. Use of club facilities without **COMPLETING A SAFETY BRIEFING** from the Range Safety Officer or his/her designee
12. **SHOOTING BEFORE OR AFTER** published hours
13. **ASSAULTS, THREATS, HARASSMENT** or otherwise unacceptable or ungentlemanly behavior
14. Use of any explosives, flash-bang, pyrotechnic or exploding targets
15. **FAILURE TO REPORT** any safety concerns or discrepancies (machine failures, etc.) to a club officer
16. **FAILURE TO RENDER ASSISTANCE** to anyone in need

MID-CAROLINA GUN CLUB
Rules and Safety Manual

MEMBERSHIP AND SAFETY MANUAL

**MID-CAROLINA GUN CLUB, INC.
1746 KENNERLY ROAD
ORANGEBURG, SOUTH CAROLINA, 29118
(CALHOUN COUNTY)**

MAIN GATE

KENNERLY ROAD AT CLARKSON LANE

RV/CAMPER ENTRANCE

KENNERLY RD. AT PINEVIEW LANE

Club Web Site & Calendar: www.midcarolinagunclub.com

Please consult the website for updates to this document. It is the member's responsibility to remain current with club rules and policies.

AFFILIATIONS:

**CIVILIAN MARKESMANSHIP PROGRAM
NATIONAL SKEET SHOOTING ASSOCIATION
AMATEUR TRAP SHOOTING ASSOCIATION
SOUTH CAROLINA TRAPSHOOTERS' ASSOCIATION
SOUTH CAROLINA SKEET SHOOTING ASSOCIATION
NATIONAL RIFLE ASSOCIATION
INTERNATIONAL BENCHREST SHOOTERS, USA
AMERICAN RIMFIRE ASSOCIATION
SOUTH CAROLINA DEPARTMENT OF NATURAL RESOURCES
SOUTH CAROLINA 4-H
SCHOLASTIC CLAY TARGET PROGRAM
NATIONAL SORTING CLAYS ASSOCIATION**

RECIPROCAL CLUB(S):

PARTRIDGE CREEK GUN CLUB, RIDGEVILLE, SC

MID-CAROLINA GUN CLUB
Rules and Safety Manual

MEMBERSHIP RULES AND SAFETY MANUAL OF THE
CLUB

16th EDITION
2024

The material contained herein along with the **By-laws of the Club** shall be considered to be the **Official Rules of the Club**. These rules supersede all previously published or otherwise communicated, rules, policies and procedures. The MCGC Executive Committee reserves the right to amend the **Official Rules of the Club** as it deems necessary as authorized under Article VI (c) of the **By-laws of the Club**.

AMENDMENTS TO RULES AND PROCEDURES

FOR REASONS OF EXPEDIENCY OR IN THE CASE OF A CONFLICT BETWEEN CLUB RULES AND PROCEDURES AND THOSE OF A MID-CAROLINA GUN CLUB APPROVED NATIONAL SANCTIONING BODY, CERTAIN RULES OR PROCEDURES CONTAINED HEREIN MAY BE WAIVED AT THE EXPRESS DIRECTION OF THE CLUB'S EXECUTIVE COMMITTEE.

SUCH WAIVER GRANTED MUST BE IN WRITTEN FORM, SPECIFIC TO RULE(S) AND/OR PROCEDURE(S) WAIVED, SPECIFY A DURATION OF THE WAIVER, SIGNED BY THE CLUB PRESIDENT AND POSTED PROMINENTLY IN THE APPLICABLE VENUE WHILE THE WAIVER IS IN EFFECT.

MID-CAROLINA GUN CLUB
Rules and Safety Manual

Contents

FORWARD	2
INTRODUCTION	7
FOUR RULES OF GUN SAFETY.....	8
EMERGENCIES	9
SHOOTING HOURS	10
SECTION 1: SAFETY	11
GENERAL FIREARM POSSESSION AND SAFE HANDLING RULES.....	11
FIREARMS SAFETY	12
GENERAL FIREARMS HANDLING RULES, ALL RANGES	13
RANGE RULES	14
SKEET TRAP SPORTING CLAYS & 5-STAND RULES	14
PATTERNING BOARD	15
RIFLE, PISTOL & CLASS III RANGE RULES	16
SECTION II: CLUB RULES - POLICIES AND PROCEDURES	19
GENERAL RULES	19
CARDINAL RULES OF OUR CLUB	21
MAIN GATE	22
BURNING	22
PAVILION COMPLEX RULES	23
MEMBERSHIP POLICIES	24
EXEMPTIONS FROM WORKDAYS:	25
OTHER MEMBERSHIPS	25
POLICIES AND PROCEDURES FOR YOUTH SHOOTING GROUPS	26
SECTION III: CLAY TARGET MACHINES -- OPERATION & SAFETY	28
GENERAL RULES	28
LAPORTE SKEET MACHINES	29

MID-CAROLINA GUN CLUB
Rules and Safety Manual

PAT TRAP MACHINES 32

CANTERBURY VOICE CALL SYSTEM 34

TOURNAMENT INSTRUCTIONS FOR CANTERBURY VOICE CALL SYSTEM..... 36

SPORTING CLAYS COURSE 37

CLAY TARGETS 37

MANUAL TRAP: OPERATION GUIDELINES 37

COCKING MANUAL TRAPS 37

DECOCKING MANUAL TRAPS 37

TOWER: AUTOMATIC TRAP OPERATIONS 38

5-STAND COURSE 39

SINGLE TARGETS 39

REPORT DOUBLES 40

TRUE DOUBLES 40

CERTIFICATION SHEET (Completed Form to be retained by club)..... 42

MID-CAROLINA GUN CLUB
Rules and Safety Manual

INTRODUCTION

WELCOME TO THE MID-CAROLINA GUN CLUB FAMILY

Mid-Carolina Gun Club, Inc. was formed on July 17, 1965 and is a South Carolina 501(c)4 not for profit corporation. The Club moved to its present location in 1972 and expanded its property holdings in 2000 to its current 100 acres. Mid-Carolina was founded and operates on the commitment of its members to volunteerism and reliance on the honor system.

Mid-Carolina Gun Club is governed by the following officers elected for one (1) year terms:

President, Vice President, Secretary, Treasurer, Cashier, Chief Instructor and Range Safety Officer.

Together, the officers form the Club's Executive Committee. The Executive Committee is charged with the responsibility of operating the Club in accordance with the Club's By-laws. A copy of the By-laws is provided to each member upon gaining membership.

Under ARTICLE XII OF THE BY-LAWS, it is the responsibility of the Executive Committee to provide for member training in order to ensure the safe environment for all members and guests. Specifically, the Club's RANGE SAFETY OFFICER is charged with the education and compliance with all safety regulations.

The safety of our members, their family and guests is paramount at Mid-Carolina Gun Club.

IT IS THE RESPONSIBILITY OF EACH MEMBER TO BE AWARE OF THE RULES OF THE CLUB AND, ESPECIALLY, SAFE FIREARMS HANDLING. It is the further responsibility of each member to similarly instruct any family member or guest before using club facilities. The RANGE SAFETY OFFICER AND ALL CLUB OFFICERS are always ready to address your safety questions and concerns.

ACCIDENTS ARE PREVENTABLE. Please read and understand this manual. Please always be vigilant and do not hesitate to call "CEASE FIRE" if you observe an unsafe situation. You are required to report all unsafe situations to a club official immediately. The Executive Committee is more interested in safety than affixing blame for a member's inadvertent inattention to safety.

Remember, you can't un-fire that shot; know the rules; be a pro-active member; get involved if you observe a situation that violates safety or club rules and procedures.

Often, a friendly reminder is all it takes. However, if any individual is reluctant or refuses to immediately comply with a ceasefire, **IT IS YOUR RESPONSIBILITY TO REPORT THIS AND ALL VIOLATIONS OF THE RULES AT ONCE. PHONE CONTACT NUMBERS ARE POSTED AT EVERY RANGE. REPORT ANYTHING ANYTIME THAT YOU FEEL IS IMPROPER REGARDLESS OF THE MEMBER INVOLVED.** The Executive Committee will investigate the matter as provided for in the By-laws. **THINK SAFE, ACT SAFE, BE SAFE!**

Good Shooting!

Your Executive Committee

THE FOUR RULES OF GUN SAFETY

**ALWAYS KEEP THE GUN POINTED
IN A SAFE DIRECTION**

**ALWAYS KEEP YOUR FINGER OFF THE
TRIGGER UNTIL READY TO SHOOT**

**ALWAYS KEEP THE GUN UNLOADED
UNTIL READY TO USE**

**ALWAYS KNOW YOUR TARGET
AND WHAT'S BEHIND IT**

EMERGENCIES

IN CASE OF EMERGENCY DIAL 911 ON YOUR CELL PHONE

- **MCGC does not use landline phone service**
- MCGC is located in CALHOUN COUNTY. **YOU MUST** advise the 911 dispatchers of this fact, or they may respond with units from Orangeburg, thereby, delaying response time.
- **It is advisable to send someone to the gate and direct EMT's into the Club.**
- **Calhoun County (Law Enforcement and Emergency Services) have an emergency gate code on file. Do not rely on this—meet emergency services at the gate.**

The Club address is:

**1746 Kennerly Road
Orangeburg, SC 29118
(Corner of Kennerly Road and Clarkson Lane)
Calhoun County**

FIRST AID

In the event of injury, the Club has placed FIRST AID TRAUMA KITS within easy reach of the members.

ALL MEMBERS ARE REQUIRED TO RENDER ASSISTANCE ANYONE IN NEED.

1. **TRAUMA KITS** are located in the **PAVILION WAREHOUSE**, the **SPORTING CLAYS BUILDING** and the **RIFLE RANGE STORAGE ROOM**.

2. **FIRST AID KITS** are located at the range officer's platform on the **BIG PISTOL BAY** and the **5-STAND BUILDING**.

3. **AED's** are located in the **PAVILION WAREHOUSE** and the **RIFLE RANGE STORAGE ROOM**.

MID-CAROLINA GUN CLUB
Rules and Safety Manual

SHOOTING HOURS

SHOOTING HOURS ARE 8:00 A.M. TO 10:00 P.M. DAILY EXCEPT AS FOLLOWS:

THERE WILL BE NO SHOOTING:

After	5:00 P.M. on Christmas Eve
Before	1:00 P.M. on Christmas Day
Before	1:00 P.M. on Easter Sunday
Before	1:00 P.M. on Thanksgiving

OR ANY OTHER TIME AS MAY BE DESIGNATED BY THE EXECUTIVE COMMITTEE.

SHOOTING BEFORE OR AFTER HOURS WILL BE BY PERMISSION OF THE EXECUTIVE COMMITTEE ONLY.

VIOLATION OF SHOOTING HOURS IS A SERIOUS OFFENSE AND MAY RESULT IN SANCTIONS INCLUDING EXPULSION FROM THE CLUB.

BE A GOOD NEIGHBOR

MID-CAROLINA GUN CLUB
Rules and Safety Manual

SECTION I: SAFETY

GENERAL FIREARM POSSESSION AND SAFE HANDLING RULES

1. **All applicable State and Federal laws governing the possession and use of firearms must be adhered to by all members and their guests.**
2. **All Firearms, other than those properly holstered and/or carried under applicable laws for personal defense, must be unloaded with actions open, and that condition plainly visible to all, unless on a designated range shooting station or firing line and engaged in the act of approved firing. The use of empty chamber indicators is highly recommended.**

Firearms that are not broken-down for transport must be removed from cases immediately upon arrival so as to make their condition is visible to all.

3. **Un-holstering a firearm for any purpose, other than to unload and make safe other than at a designated firing point on a pistol range, is a serious breach of gun safety rules.**
4. **The use of alcohol, either before or while handling firearms, is STRICTLY PROHIBITED.**
5. **It is the responsibility of club members to see that their family members and guests adhere to all rules. Family or guest violations will be considered a violation by the member.**

MID-CAROLINA GUN CLUB
Rules and Safety Manual

FIREARMS SAFETY

MEMBERS OF MID-CAROLINA GUN CLUB ARE RESPONSIBLE FOR THE SAFE HANDLING OF FIREARMS WHILE ON CLUB PROPERTY. Members are also responsible for seeing that their family members and guests handle firearms safely. The rules listed below apply to all persons while at the Club.

THE NUMBER ONE RULE at Mid-Carolina is that **ALL FIREARMS MUST BE IN A SAFE CONDITION AND THAT CONDITION PLAINLY VISIBLE AT ALL TIMES** ON THE CLUB PROPERTY unless engaged in actual firing. The use of empty chamber indicators, when applicable, is highly recommended. **SAFE CONDITION is defined as follows:**

1. Handguns
 - a. Revolvers -- cylinder open and no ammunition in cylinder charge holes
 - b. Pistols -- Slide locked to the rear and open, chamber empty, magazine removed, safety engaged, if applicable
 - c. Others -- Action open, chamber empty, and safety engaged
2. Rifles
 - a. Bolt Actions -- Bolt open or out, chamber empty, magazine empty and/or removed, if applicable, safety engaged, empty chamber indicator if available
 - b. Pump and Semi-Auto -- Action open, chamber empty, magazine removed if applicable, safety engaged, empty chamber indicator if available
 - c. Lever Actions -- Action open, chamber & magazine empty or removed if applicable, safety engaged, empty chamber indicator if available
3. Shotguns
 - a. Pump and Semi-Auto -- Action open, chamber empty, no ammunition in magazine tube, safety engaged
 - b. Hinged Action (side by side, over/under, single barrel) -- Action open, chamber empty, safety engaged, if applicable
 - c. Others -- Action open, chamber empty, magazine removed or empty, safety engaged
4. Muzzle Loading Firearms
 - a. Sidelock Rifles -- Chamber empty, hammer on half-cock, no primer or powder in pan
 - b. Inline Rifles -- Chamber empty, Action open, no primer seated

Firearms that are not broken-down for transport must be removed from cases immediately upon arrival so as to make their condition is visible to all.

MID-CAROLINA GUN CLUB
Rules and Safety Manual

GENERAL FIREARMS HANDLING RULES, ALL RANGES

1. The use of alcohol, illegal drugs or prescribed controlled substances before or during handling of firearms is **STRICTLY PROHIBITED**.
2. Ensure all family members and guests know firearms safety handling rules prior to using the club. Children and guests must, **AT ALL TIMES**, be under **DIRECT and POSITIVE SUPERVISION OF A MEMBER** when using the club. Direct and positive supervision is defined as the member being in sufficiently close proximity to immediately intervene should an unsafe condition arise.
3. Any firearm removed from a vehicle or passed to another individual must be inspected to assure the firearm is in a **SAFE CONDITION**.
4. If others are present and not wearing eye and ear protection, you must cease fire.
5. All firearms are presumed to be loaded at all times -- do not point a firearm at anyone or anything other than the designated target.
6. Dry firing is permitted only in designated firing areas and always in the downrange direction.
7. The firing of handguns, rifles or shotguns anywhere other than their designated ranges is prohibited. If unsure, contact the Range Safety Officer or any other club officer before proceeding.
8. Indiscriminate or unaimed shooting is prohibited on all ranges.
9. Unless sanctioned by the Club, hunting on club property is prohibited.
10. IMMEDIATELY notify club officials of safety or rules violations or concerns.
11. **SHOUT "CEASE FIRE" IF YOU SEE A SAFETY VIOLATION.**

MID-CAROLINA GUN CLUB
Rules and Safety Manual

RANGE RULES

SKEET, TRAP, SPORTING CLAYS & 5-STAND RULES

Both new and current members planning to use the shotgun facilities for the first time or after a prolonged absence should contact the venue manager of that venue to schedule a briefing for the use and operation of that venue.

1. Members will confer as to the proper time to open, load or close skeet or trap houses to ensure that no one is downrange of an active range.
2. Maximum shot size allowed on all shotgun ranges will be #7-1/2 for lead and #7 for steel shot.
3. Organized shooting events take precedence over casual shooting. Dates of organized events will be posted in advance on the club calendar. During organized shooting events, every effort will be made to accommodate members' use of club facilities.
4. If others present and not wearing eye and ear protection, you must cease fire.
5. Do not walk or stand in front of any active trap house or skeet low house. Targets leaving these houses travel in excess of 40 mph and WILL CAUSE INJURY.

**ALWAYS VISUALLY ENSURE TRAPS ARE RELEASED BEFORE
PASSING IN FRONT OR ENTERING HOUSES.**

6. While on all ranges, loaded firearms are permitted **ONLY ON THE ACTUAL FIRING POSITIONS**. After firing, you must unload unused or spent shells and make your firearm safe **BEFORE** stepping from the firing point. Movement between shooting stations on all ranges will be conducted with all firearms in the SAFE (OPEN) CONDITION.
7. **180-DEGREE SKEET SHOTS ARE PROHIBITED.**
8. **NO MORE THAN TWO (2) SHELLS** may be loaded at any one time on all shotgun ranges.
9. All trash must be picked up and disposed of properly.
 - a. Pick up your spent shotgun shells.
 - b. Do not toss duds into the field; mowers may detonated them; place duds in the short white cans provided on each field.
 - c. Shotgun hulls may be placed in the short white containers or left in a box in the pavilion for use by other members (AA, STS, Gold Medal {plastic or paper} and Gun Clubs are sought after).

MID-CAROLINA GUN CLUB
Rules and Safety Manual

- d. Empty Clay target boxes should always be removed from venue houses after shooting **AND THE MACHINES HAVE BEEN RELOADED**. They should be carried to the BURN PILE located BETWEEN SPORTING CLAYS AND THE PAVILION.

DO NOT PLACE TARGET BOXES IN THE BLUE TRASH CANS
DO NOT PLACE TARGET BOXES IN THE BLUE TRASH CANS
DO NOT PLACE TARGET BOXES IN THE BLUE TRASH CANS
DO NOT PLACE TARGET BOXES IN THE BLUE TRASH CANS

10. Each skeet house is equipped with a **BROOM** and a **DUSTPAN**—Sweep out the house before leaving.
11. **FOLLOW PROPER MACHINE SAFETY AND OPERATING PROCEDURES**
12. **SKEET FIELD #5 IS NOT TO BE USED EXCEPT:**
- IN SANCTIONED MATCHES
 - USED TO SHOOT INTERNATIONAL SKEET
 - IN ANY CASE DURING A SANCTIONED RIFLE MATCH
12. **LOOSELY COIL** AND RETURN CONTROL CORDS TO THEIR RESPECTIVE LOW HOUSE LOCATION WHEN FINISHED SHOOTING.
13. **SHOUT “CEASE FIRE” IF YOU WITNESS A SAFETY VIOLATION.**

PATTERNING BOARD

A shotgun patterning board is located between skeet fields 1 and 2 and beside trap field 5. No shot larger than #7½ (lead or #7 steel) may be used on the pattern board. Members should provide their own suitably sized paper or cardboard and clamps. Permanent distance markers at 20, 30 and 40 yards have been installed at ground level at skeet board.

Shot larger than #7 must be tested on the rifle range following the rules for that range.

MID-CAROLINA GUN CLUB
Rules and Safety Manual

RIFLE, PISTOL & CLASS III RANGE RULES

1. Members will confer as to the proper time to set-up or change targets to ensure that no member or guest is downrange of an active range.
2. The **RED CEASE-FIRE LIGHTS**, if equipped, must be turned on prior to going downrange and turned off after ensuring no one is downrange and prior to resumption of fire.

DO NOT FIRE UNTIL YOU ARE CERTAIN RANGE IS SAFE

3. **NO HANDLING OF FIREARMS FOR ANY PURPOSE IS ALLOWED** when anyone is **DOWNRANGE** and/or the **RED** ceasefire lights are on. This includes, but is not limited to:
 - a) Casing and uncasing firearms
 - b) Moving firearms on or off the bench or table
 - c) Moving firearms to or from storage racks and vehicles
 - d) Adjusting scopes, rests, etc. or handling anything on the bench

WHEN THE RED LIGHTS ARE ON, DO NOT TOUCH ANY PART OF ANY GUN!

4. **NO ONE IS ALLOWED DOWNRANGE UNTIL AND UNLESS ALL FIREARMS ARE IN A SAFE CONDITION. ALL PERSONS ON THE RANGE SHOULD STEP BACK FROM THE SHOOTING BENCHES WHILE A CEASE FIRE IS IN FORCE.**
5. **NO HIGH-POINTING IS ALLOWED. DO NOT ELEVATE YOUR GUN ON ANY RANGE NEAR THE TOP OF THE BERM.**
6. Indiscriminate or unaimed shooting is prohibited.
7. Targets should NOT be placed near the edges of target frames. **DO NOT SHOOT TARGET FRAMES.** Remove and dispose of targets and return target frames when finished shooting.

RIFLE RANGE: THE CENTER OF THE TARGET MUST BE 5'- 6" FROM THE GROUND. Club provided target frames meet this requirement. This is to help ensure bullets to not ground skip over the berm. **Target frames must be placed in the provided target holders at 50,100, 200 and 300-yard/meter distances.**

BIG PISTOL BAY: ONLY PAPER TARGETS ON APPROVED TARGET FRAMES MAY BE USED. Target frames must be placed in the provided target holders at 25 and 50 yards.

SMALL PISTOL BAY: ALL TARGETS MUST REMAIN UNDER THE HOOD. SMALL PISTOL BAY ONLY.

ONE SHOOTER MAY ADVANCE PROVIDING:

1. Only the shooter and an instructor may advance beyond the firing line (shed).
2. Only one shooter at a time is allowed beyond the firing line.
3. **Steel targets may not be engaged under 10 yards.** A 10 yard marker has been placed on the range side walls.
4. Shooters must require anyone on the range to wear eye and hearing protection—no exceptions.

MID-CAROLINA GUN CLUB
Rules and Safety Manual

NO GROUND TARGETS ARE ALLOWED ON ANY RANGE

8. **Steel targets** (composed of AR500 steel [or equivalent]) are located on a swinging frame at the base of the 300 yard berm and may only be engaged from the firing line—**Benches 1-5**.
9. Muzzle loading firearms should be capped or primed immediately before firing and only at a designated firing point with the firearm pointed down range. Bulk containers of powder should be kept an appropriate distance from any source of ignition.
10. **National Firearms Act (NFA) Class III Weapons**

The use of FULLY AUTOMATIC, Class III weapons, is **PROHIBITED at Mid-Carolina Gun Club UNLESS an Executive Committee waiver is obtained. The rule applies to all parties and includes law enforcement officers and entities.**

Other Class III items, with applicable tax stamps, ARE permitted – firearms and accessories such as:

1. Suppressors/Silencers (use is highly encouraged)
2. Short Barreled Rifles (SBR)
3. Shotguns with barrels shorter than 16 inches (Sawed-off Shotguns**)

**Class III shotguns are restricted for use on the rifle range only.

Other firearm accessories not presently classified as NFA Class III but are still prohibited at MCGC are:

1. Forced Reset Triggers (FRTs)
2. Binary Triggers
3. Bump Stocks

Firearms with these accessories, while not illegal, are prohibited due to potential loss of control of the weapon.

The use of Tannerite or any other exploding targets/exploding devices is **STRICTLY PROHIBITED** at MCGC.

11. Shotguns firing #6 shot or larger, or slugs, are treated as rifles.
12. **PISTOLS, CHAMBERED FOR BOTTLENECK, RIFLE OR HYPER VELOCITY PISTOL CALIBERS, ON THE RIFLE RANGE** are permitted ONLY after the member has notified the RSO and received a **one time** briefing for that purpose.
13. FIRING PISTOLS AS NOTED ABOVE AGAINST METAL TARGETS IS PROHIBITED.
14. Members may draw and fire from the holster on the **SHORT PISTOL RANGE ONLY**. **Holsters must be strong side OUTSIDE THE WASTE BAND HOLSTER. Shoulder and cross draw holsters are prohibited for drawing. Members must safely draw their firearm and be on target before taking the shot. Members must position themselves to the right or left of the 'rail' before drawing so there are no obstructions between the shooter and target. Target distance rules still apply.**
15. **SHOOTING PAST THE ESTABLISHED FIRING LINE ON ANY RANGE IS PROHIBITED, EXCEPT:**
 1. **Sanctioned matches requiring firing forward of the line, or**
 2. **At the SMALL PISTOL BAY.**

MID-CAROLINA GUN CLUB
Rules and Safety Manual

16. **THE FOLLOWING RULE IS TO BE OBSERVED WHEN MIXED RANGE TARGETS ON THE RIFLE RANGE IS IN EFFECT:** MEMBERS WILL WORK TOGETHER TO KEEP AS MUCH SEPARATION BETWEEN THEMSELVES AS PRACTICAL.
17. Observe any additional posted rules and warnings at the range. Additional rules MAY include prohibition of certain ULTRA-POWERFUL CARTRIDGES may be detrimental to the ranges.
18. **CLEAN UP AFTER YOURSELF.** ALL TRASH MUST BE DISPOSED OF PROPERLY:
 - A. SHELL CASINGS MAY BE PLACED IN CANS ON THE RIFLE/PISTOL RANGE
 - B. SWEEP UP RIMFIRE CASES AND POLICE THE RANGE AFTER USE
 - C. TARGETS SHOULD BE REMOVED FROM FRAMES
 - D. TARGET FRAMES SHOULD BE RETURNED TO THEIR STORAGE LOCATION
 - E. TRASH CANS, WHEN NECESSARY, SHOULD BE EMPTIED TO BURN PIT
20. Some basic range equipment is provided for use at the Club's range only. Do not remove these items.
21. **SHOUT "CEASE FIRE" IF YOU WITNESS A SAFETY VIOLATION.**
22. If others are present and not wearing eye and ear protection, you must cease fire.
23. **WHEN A SCHEDULED SKEET TOURNAMENT IS UNDERWAY REQUIRING THE USE OF SKEET FIELD 5, THE RIFLE RANGE WILL BE CLOSED** UNLESS OTHERWISE APPROVED BY THE EC. AN EXAMPLE OF THE CO-USE OF THE RIFLE RANGE AND SKEET FIELD 5 COULD BE LIMITING RIFLE RANGE USE TO RIMFIRE CALIBERS OR SUPPRESSED FIREARMS. BUT IN ALL CASES, ANY USE OF THE RIFLE RANGE WHILE SKEET FIELD 5 IS IN USE DURING A SCHEDULED MATCH IS PROHIBITED WITHOUT PRIOR AUTHORIZATION.

MID-CAROLINA GUN CLUB
Rules and Safety Manual

SECTION II: CLUB RULES - POLICIES AND PROCEDURES

GENERAL RULES

All club rules, policies and procedures will be subject to and in accordance with the Club's By-laws. New or existing members may download a copy of the Club's Rules and By-laws from the club web site or request a copy from the Secretary.

Members are responsible to ensure all family members and guests know firearms safety handling rules. Children and guests must, at all times, be under DIRECT and POSITIVE SUPERVISION of MEMBERS when using the Club. Direct and positive supervision is defined as the member being in sufficient proximity to actively intervene should an unsafe condition arise.

1. The Club operates on the **HONOR SYSTEM**. Therefore, it is essential that all members FULLY OBSERVE and MONITOR this system for compliance.
2. **ALL MEMBERS MUST SWIPE GATE CARD AT MAIN GATE EVEN IF THE GATE IS OPEN.**
3. **ALL MEMBERS MUST SIGN-IN, AND LIST INTENDED PURPOSE OF UPON ARRIVAL AT CLUB. IF MEMBERS BRING OR MEET GUESTS, LIST "GUEST(S)" AFTER YOUR NAME. IT IS NOT NECESSARY TO LIST FAMILY OR GUESTS BY NAME.**
4. The Sign-In Log is located in the mailbox on the way into the Club at the notice board.

ALL MEMBERS MUST SIGN-IN LEGIBLY ON ARRIVAL
IF THE CLUB CAN'T READ YOUR WRITING
YOU WILL BE SUBJECT TO SANCTIONS

5. **EYE AND EAR PROTECTION MUST BE UTILIZED AT ALL TIMES WHEN FIRING OR IN THE PROXIMITY OF OTHERS FIRING.**
6. **SHOOTING FEES MUST BE PAID AT TIME OF USE.** The procedure is as follows:
 - a. Complete a shooting fee form in the appropriate amount—**LEGIBLY**.
 - b. **INDICATE ON WHICH FIELD YOU SHOT.**
 - c. **Note any problems in the comment section of the form.**
 - d. **Staple (ONE STAPLE PLEASE) your check or cash to the form and insert in a lock box;**
Lock boxes are located
 1. In Pavilion Warehouse
 2. In Sporting Clays building
 3. In 5-stand building
 - e. **If you are unable to pay your bill at the time of use,**
 1. Fill out two (2) shooting fee forms
 2. Place one form in the lock box
 3. **Mail your payment, with second form, to the Club IMMEDIATELY.**
 - f. **If you failed to pay for club services after departing the Club,**
 1. Contact the Club immediately
 2. **Mail your payment to the Club IMMEDIATELY.**

MID-CAROLINA GUN CLUB

Rules and Safety Manual

- g. The Club does not send out billings; it is your responsibility to keep your account current. This includes your guests' target fees at time of shooting.

MID-CAROLINA GUN CLUB SHOOT PAYMENT FORM						
1746 Kennerly Road, Orangeburg, SC 29118						
Member Name: PRINT First & Last				Date: Today's Date		
Please Print Clearly & Legibly to ensure accurate handling of your Payment						
No. Rounds	Shooting Venue		Price	Sub-total	Field	Comments or Problems
3	Skeet	(25 Targets)	\$4.00	\$12	2	No problems
	Trap	(25 Targets)	\$4.00			
	Trap Doubles	(50 Targets)	\$8.00			
	Sporting Clays	(50 Targets)	\$8.00			
2	5-Stand	(25 Targets)	\$4.00	\$8		
	Ear Plugs	(1-Pair)	\$0.50			
	Donations (Designation)					
	Other (Please Describe)					
Total Charges Due				\$20	Payment (Circle): Cash / Check / Debit	
The PRICES above apply to all member, guests, Youth Teams and other eligible participants; NO EXCEPTIONS. All charges are due at the time of shooting activity. Fill out the Payment Form completely per the Club Policies and Procedures. Staple your payment to the Payment Form and place in a Drop-Box located at the Sporting Clays range, 5-Stand storage room, Pavilion warehouse or the Club Office. You may make advance payment to your Shoot Account (Credit) and Debit shooting fees against your Credit balance until depleted . The Club does not send statements or invoices for Shooting Fees. IT IS YOUR RESPONSIBILITY TO KEEP YOUR ACCOUNT BALANCE CURRENT.						
Member Signature: _____						

7. **ANNUAL DUES ARE DUE ON JUNE 1ST.** Members should be prompt in paying all dues and/or assessments. Late charges are provided for in the By-laws.
8. **Club meetings are each 2nd Tuesday at 6:30 PM.** Dinner follows each meeting with members doing the cooking—volunteers are always welcome. The Club reimburses up to \$200 for cooking expenses unless otherwise approved. *There are no meetings scheduled during the months of January and July.*
9. **The Annual Meeting of the Club is the 2nd Tuesday of October.** Officer elections are conducted at that meeting. Members will be notified of the Annual Meeting pursuant to the By-laws.
10. From time to time, Special Meetings may be called; these will be noticed in advance pursuant to the By-laws.
11. Pets under control are welcome. Be respectful of others who may not love your dog as much as you. Clean-up after your pet.
12. **THE BOY SCOUT RULE IS ALWAYS IN EFFECT: LEAVE THE CLUB IN BETTER CONDITION THAN YOU FOUND IT.**

MID-CAROLINA GUN CLUB
Rules and Safety Manual

CARDINAL RULES OF THE CLUB

VIOLATION OF, BUT NOT LIMITED TO, THE FOLLOWING RULES MAY RESULT IN LOSS OF CLUB PRIVILEGES, REPRIMAND, SUSPENSION OR EXPULSION from the Club pursuant to Article VIII of the Club's By-laws:

1. Revealing the **CLUB COMBINATION** or giving or loaning **GATE CARDS** to any nonmember, family member or a member not in good standing is **STRICTLY FORBIDDEN**
2. Failure to **SWIPE GATE CARD AND/OR SIGN-IN LEGIBLY**, AND LIST INTENDED PURPOSE OF VISIT. If you have guests, add "Guests" after your name
3. Failure to **PROPERLY** and **LEGIBLY** complete a SHOOT TICKET and/or **FAILURE TO PAY** for services or **FAILURE TO IMMEDIATELY FOLLOW OMITTED PAYMENT PROCEDURE**
4. Failure to use **EYE and EAR PROTECTION** or or adjacent to an active range
5. **VANDALISM, DESTRUCTION, MISAPPROPRIATION OR THEFT OF CLUB PROPERTY**, intentional and unintentional, damage of target frames, or personal property
6. **HANDLING A FIREARM** when not at a designated firing point or **HANDLING A FIREARM** when anyone is **DOWNRANGE**.
7. **POINTING A WEAPON**, regardless of loaded condition, at anyone or anything other than a designated target
8. **INDISCRIMINATE FIRING** of any gun on any range
9. Involvement or participation in **ILLEGAL ACTIVITY** on club grounds
10. **REPEATED** RULES or SAFETY violations
11. Use of club facilities without **COMPLETING A SAFETY BRIEFING** from the Range Safety Officer or his/her designee
12. **SHOOTING BEFORE OR AFTER** published hours
13. **ASSAULTS, THREATS, HARASSMENT** or otherwise unacceptable or ungentlemanly behavior
14. Use of any explosives, flash-bang, pyrotechnic or exploding targets
15. **FAILURE TO REPORT** any safety concerns or discrepancies (machine failures, etc.) to a club officer
16. **FAILURE TO RENDER ASSISTANCE** to anyone in need

MID-CAROLINA GUN CLUB
Rules and Safety Manual

MAIN GATE

NO RV/CAMPERS ALLOWED AT MAIN GATE

The Club's Main Gate operates on a coded card system. You must be a member and have completed a safety briefing to obtain a card. YOUR CARD INDICATES THE DATE AND TIME OF YOUR ENTRY AND DEPARTURE. Your initial card will be furnished to you at no charge upon completion of a safety briefing; each additional card costs \$5.

YOU MAY NOT SHARE OR LOAN YOUR CARD WITHOUT PRIOR PERMISSION FROM THE CLUB. PROVIDING A CARD TO A NON-MEMBER, FAMILY MEMBER OR MEMBER NOT IN GOOD STANDING IS AN OFFENSE THAT MAY RESULT IN EXPULSION FROM THE CLUB.

Guests are welcome providing you arrive at the Club either concurrently or prior to their arrival. Use your card to allow them entry and exit.

THE GATE OPERATES ON A 22-SECOND CYCLE. **DO NOT ATTEMPT TO PASS MORE THAN ONE VEHICLE THROUGH THE GATE AT ONE TIME.** DAMAGE TO YOUR VEHICLE WILL (AND HAS) RESULTED. If you catch the gate in the middle of a cycle, swipe your card, look for the green light and then proceed; the gate will begin another 22-second cycle. The gate has a back-up power supply that ensures you are able to leave the Club in the event that power is lost.

FROM TIME TO TIME, YOU WILL ARRIVE AND FIND THE GATE LOCKED OPEN. This is so guests may access open shooting events, a youth group may be practicing, the club is expecting a delivery, etc. **The member who locks the gate open is responsible to see that the gate is closed when the activity is completed.**

EVEN IF YOU FIND THE GATE OPEN ON ARRIVAL OR DEPARTURE, YOU MUST STILL TOUCH YOUR CARD ON THE READER AND GET A GREEN LIGHT TO ENTER THE CLUB. The importance of keeping an accurate record of members' use of the club cannot be overstated and is for your protection.

RV/CAMPER GATE

The RV gate is 1/10 mile from main gate on Kennerly Rd. at Pineview Lane. **Please proceed slowly as this is a neighborhood. Watch for children and pets, and WATCH YOUR DUST.**

BURNING/FIRES

- 1. Burning of debris/trash is prohibited unless a club officer is present.**
- 2. Campfires PROHIBITED without PRIOR PERMISSION from Executive Committee.**

MID-CAROLINA GUN CLUB
Rules and Safety Manual

PAVILION RULES

CHILDREN AND GUESTS MUST, AT ALL TIMES, BE UNDER DIRECT AND POSITIVE SUPERVISION OF MEMBERS when using the Club and especially when firing firearms.

1. Firearms must be uncased and in gun racks and in safe condition
2. No firearms are allowed on tables or chairs or leaned or propped against any surface other than a gun rack.
3. No smoking is permitted inside the buildings or any covered area.
4. All kitchen utensils used must be washed and put away. **SECURE THE COFFEE POT.**
5. Do not dispose of perishable items inside buildings or in outside trash barrels or burn pit; neighborhood dogs will simply spread garbage around the property. **TAKE YOUR PERISHABLE TRASH WITH YOU.**
6. If you make a mess, clean it up. Cleaning supplies and vacuum are located within the pavilion.
7. For the purposes of this section, the Club's outdoor cook shed will be considered as part of the pavilion complex.
8. Secure the pavilion complex when leaving.
9. Treat the facilities like you own them -- **YOU DO!**

MID-CAROLINA GUN CLUB
Rules and Safety Manual

MEMBERSHIP POLICIES

1. **Membership in the Club is a SINGLE PERSON MEMBERSHIP ONLY. IMMEDIATE FAMILY members are always welcome. However, no family member of a member is, in fact, a member of the gun club.** As stated elsewhere in the Rules of the Club, members are responsible for their guest's actions.
2. **Members must receive a briefing on club rules policies and procedures prior to any use of the Club.**
3. Members have guest privileges. There are no restrictions as to number of guests a member may bring or how frequently a guest may use the facility with a member. However, **MEMBERS ARE AT ALL TIMES RESPONSIBLE FOR THEIR GUESTS AND FAMILY MEMBERS ACTIONS AND THEIR SAFETY. A MEMBER OF THE CLUB MUST BE PRESENT AT ALL TIMES WHEN HE/SHE HAS GUESTS AND FAMILY MEMBERS AT THE CLUB. GUESTS AND FAMILY MEMBERS MUST BE UNDER DIRECT AND POSITIVE SUPERVISION.**
4. Members will conduct themselves as ladies and gentlemen and endeavor to cooperate in the shared usage and harmony of the Club.
5. Members should always be prepared to lend assistance in case of emergency to anyone in distress.
6. Children should be closely supervised at all times while on Club grounds.
7. A friendly demeanor should always be displayed to the Club's neighbors.
8. All posted shooting restrictions must be strictly observed. **Shooting hours are from 8 am to 10 pm except:**

THERE WILL BE NO SHOOTING:

After	5:00 P.M. on Christmas Eve
Before	1:00 P.M. on Christmas Day
Before	1:00 P.M. on Easter Sunday
Before	1:00 P.M. on Thanksgiving

OR ANY OTHER TIME AS MAY BE DESIGNATED BY THE EXECUTIVE COMMITTEE.

VIOLATION OF SHOOTING HOURS IS A SERIOUS OFFENSE AND MAY RESULT IN SANCTIONS.

BE A GOOD NEIGHBOR.

MID-CAROLINA GUN CLUB

Rules and Safety Manual

9. Club work days are regularly scheduled and members should make every effort to attend and help keep the Club in good condition. All members are required to perform four (4) hours a year of work for the Club or pay \$50 at fiscal year's end, May 31st. Exemptions are granted pursuant to the By-laws.

EXEMPTIONS FROM WORKDAYS:

Article IV of the By-laws of the Club is excerpted as follows (exemptions):

1. MEMBERS 65 YEARS OF AGE OR OLDER
2. MEMBERS POSSESSING A VALID HANDICAP PARKING TAG ISSUED BY A GOVERNMENTAL AGENCY
3. LIFE MEMBERS OF THE CLUB
4. HONORARY MEMBERS OF THE CLUB
5. MEMBERS DEMONSTRATING TO THE EXECUTIVE COMMITTEE A REASON AS TO WHY THEY SHOULD BE EXEMPT FROM THE RULE (EXEMPTIONS COULD INCLUDE REASONS OF A MEDICAL OR GEOGRAPHIC NATURE, etc.)

OTHER MEMBERSHIPS

Article III of the By-laws of the Club is excerpted as follows:

- (A) Adult children of members are not members of the Club. An adult child is defined as the dependent of any member that has reached the age of 18 years and is not a full-time student. They may use club facilities only as guests under the direct supervision and presence of a member in good standing.
- (B) A legacy membership is available to the adult children of members in good standing. A legacy membership will not differ in any way from the regular membership criteria except that the initiation fee will be substantially discounted and determined by the executive committee and listed on the legacy membership application.
- (C) A candidate for legacy membership must apply before their 21st birthday unless that candidate is a full-time student. A candidate may apply for legacy membership within one year of the completion of their full-time education regardless of age.

ACTIVE DUTY MILITARY MEMBERSHIP

Article III of the By-laws of the Club is excerpted as follows:

- (E) In recognition of their valuable service and sacrifice to the United States of America through their service in the armed forces of our country, current active-duty members of the United States armed forces will be allowed to join the club without payment of an initiation fee. This membership will be known as an associate member. Associate members do not have voting privileges and are not responsible for assessments or fees with the exception of shooting fees.

MID-CAROLINA GUN CLUB Rules and Safety Manual

Associate members who are separated from the service for any reason may become full members of the Club by paying the current initiation fee and fulfilling all conditions listed on the membership application and those required by the By-laws of the club listed above in this article.

POLICIES AND PROCEDURES FOR YOUTH SHOOTING GROUPS

1. **Only groups approved by the Club in advance are allowed to make use of club facilities. Groups must provide a waiver of liability and proof of liability and injury coverage from the sponsoring organization.**
2. Groups must provide a practice schedule and work with other groups to coordinate Club availability.
3. Shooting fees are due and payable immediately.

Mid-Carolina Gun Club (Club) fully supports the teaching of safe gun handling, good sportsmanship and the fundamentals of shooting to everyone, but no more so than to the youth of America. The Club continues to make every effort to do more than its part to make its facilities open to youth groups to use as a safe and wholesome teaching facility. Mid-Carolina Gun Club is a private membership organization.

While membership is open to all qualified applicants, the Club is primarily operated by and for the benefit of its members. VISITORS TO THE CLUB, YOUTH OR ADULT, DO SO AT THEIR OWN RISK AND AT THE INVITATION OF THE MEMBERS. Visitors are required to conduct themselves in accordance with the rules of the Club at all times. Thus, it is important to convey to visitors certain ground rules. CLUB RULES ARE NON-NEGOTIABLE AND WILL BE OBSERVED AND ENFORCED WITHOUT EXCEPTION:

1. SAFETY IS THE NUMBER ONE PRIORITY AT ALL TIMES. NO YOUTH, INDIVIDUALLY OR IN GROUPS, MAY HANDLE ANY FIREARM WITHOUT CLOSE ADULT SUPERVISION. Only adults who have received safety training to the satisfaction of the Club will meet the definition of "adult supervision."
2. Firearms, upon arrival and exiting vehicles, must be uncased and in safe condition when not in use.
3. Firearms must be uncased and in gun racks and in safe condition when not in use.
4. No firearms are allowed on tables or chairs or leaned or propped against any surface other than a gun rack.
5. AT LEAST ONE MEMBER IN GOOD STANDING MUST BE IN ATTENDANCE for visitors to be present without the permission of the Club's Executive Committee.
6. THE RANGE RULES OF THE CLUB SHALL BE ADHERED TO AT ALL TIMES. THE MOST IMPORTANT RANGE RULE STATES ALL FIREARMS MUST BE OPEN AT ALL TIMES UNLESS PREPARING TO FIRE.
7. Whether engaged in shooting, pulling or observing **ANYONE ADVANCING BEYOND THE BOUNDARIES ONTO A RANGE MUST, AT ALL TIMES, WEAR SUITABLE EYE AND EAR PROTECTION.** The boundaries of each range are defined by red signs with white lettering. Ear plugs and safety glasses are available and found in the pavilion warehouse. IT IS EXTREMELY COMMON FOR TARGET DEBRIS TO LAND ON ADJACENT FIELDS WITH ENOUGH ENERGY TO CAUSE SERIOUS INJURY.

MID-CAROLINA GUN CLUB
Rules and Safety Manual

8. **NO ONE IS ALLOWED TO WALK IN FRONT OF AN ACTIVE TARGET THROWING MACHINE OR PAST A POINT AT WHICH THEY COULD BE ENDANGERED BY FIRE FROM AN ADJACENT RANGE.**
9. **NO NON-MEMBER MAY ENTER A SKEET OR TRAP HOUSE OR CLIMB ANY TOWERS OR OTHERWISE INTERACT IN ANY WAY WITH ANY CLAY TARGET THROWING MACHINERY** without **EXPRESS** permission of the venue manager.
10. For their own safety, youth group members must confine themselves to the approved venue for their authorized activity. Presence at, or use of, other fields and/or ranges without a supervising adult club member present is strictly prohibited.

MID-CAROLINA GUN CLUB
Rules and Safety Manual

SECTION III: CLAY TARGET MACHINES -- OPERATION & SAFETY

GENERAL RULES

THE CLUB'S CLAY TARGET THROWERS ARE EXPENSIVE AND POTENTIALLY DANGEROUS PIECES OF EQUIPMENT. SERIOUS INJURY WILL RESULT FROM MISUSE, OR IGNORANCE OF THEIR OPERATION.

A round of skeet or trap at MCGC is 25 targets. It's easy to shoot a few extras and feel like nobody gets hurt. Remember, MCGC charges a minimal amount per round—perhaps less than a quarter of many other shooting facilities.

PLEASE RESPECT YOUR CLUB

HANDLE CLAY TARGETS LIKE EGGS!

DO NOT make any adjustments, repairs or alterations to any piece of club equipment other than those described, herein. When in doubt, shut the machine down -- go to another field. Call a club officer to report any issues.

CHILDREN AND GUESTS ARE NOT ALLOWED TO OPERATE, LOAD OR ADJUST CLAY TARGET MACHINES. FAILURE TO OBSERVE THESE WARNINGS AND INFORMATION CONTAINED, HEREIN, COULD RESULT IN SERIOUS INJURY.

CLEAN UP AFTER YOURSELF AND OTHERS, IF NECESSARY, AFTER SHOOTING. This includes picking up all hulls and any trash. **DO NOT PLACE 'DUDS' IN TRASH CANS**—take them with you or dispose of them in the short white cans provided on each field.

For purposes of clarity, all directions (left, right, etc.) will be as VIEWED FROM THE REAR of a machine or house.

LAPORTE SKEET MACHINES—NEW for 2025

The Club's 5 skeet fields are equipped with Laporte automatic skeet machines. **Fields 1-4** are setup to throw targets according to American Skeet rules.

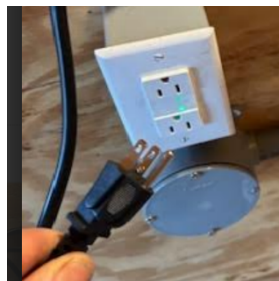
Field 5 is generally set up to throw targets under the rules of International Skeet. **UNLESS YOU INTEND SHOOTING INTERNATIONAL SKEET, DO NOT USE FIELD #5 WITHOUT PRIOR PERMISSION FROM THE SKEET DEPARTMENT.**

OPERATING INSTRUCTIONS

4 EASY STEPS TO TURN ON / ARM THE MACHINE

1 - OPEN THE WINDOW - Use the bungee cord to gently lower the window. This protects the window falling open and breaking the hinges.

2 - PLUG IN THE MACHINE –



3 - TURN THE MACHINE TO "ON." At the back of the machine is a 3-way switch. **Flip the switch up into the "ON" position.** Nothing appears to happen at this point, but the machine has power.



4 - ONCE ON THE FIELD PRESS THE RELEASE BUTTON

-THIS WILL ARM THE MACHINE AND YOU WILL BE READY TO SHOOT. You should be able to hear the machine cocking, but no target is thrown on this 1st press of the button. Pressing the *DOUBLES* button will arm both machines if they are in the "ON" position.

The next time you press the release button a target should appear from the window - be ready to shoot and break it!

EVERY TARGET COUNTS



4 EASY STEPS TO UNCOCK / TURN OFF THE MACHINE

1 - **UNCOCK THE MACHINE** - Using the 3-way switch on the back of the machine **flip the switch down** into the "OFF" position and **immediately release the switch**. The switch will automatically return to the middle position and the machine will release the arm throwing the target and leaving the throwing arm sticking out to the side of the machine.

DO NOT HOLD THE SWITCH DOWN IN THE OFF POSITION - this could cause the machine to start its cocking process leaving the machine in an ARMED position. The Machine should ALWAYS be left in the UNARMED position.

2 - **UNPLUG THE MACHINE** - Please **hold on to the actual plug** when pulling it from the outlet – this will protect the cord and outlet from damage.

3 - **CLOSE THE WINDOW** - Using the bungee cord raise and secure the window.

4 - **LOAD THE MACHINE AND SWEEP UP** - Making the machines ready for the next user and **keeping the houses clean is EVERYONE'S responsibility**. This makes for a more enjoyable experience and longer lasting machines - PLEASE DO YOUR PART.

MID-CAROLINA GUN CLUB
Rules and Safety Manual

There you are done !!! If you have any questions Please ask, and we hope you enjoy our new machines. Take care of them and they will last the club a long time.

DID YOU REMEMBER TO PULL THE PLUG?



MID-CAROLINA GUN CLUB
Rules and Safety Manual

TRAP MACHINES

PAT TRAPS (Fields 5, 6, 7 and 8--North Traps)
CANTERBURY VOICE RELEASE SYSTEM (CVR)

STARTING PROCEDURE:

DANGER: ALWAYS VERIFY MACHINE IN DECOCKED AND SAFE CONDITION BEFORE WALKING IN FRONT OR ENTERING THE TRAP HOUSE—NEVER ASSUME THE LAST USER MADE THE MACHINE SAFE. FAILURE TO DO SO WILL RESULT IN SERIOUS INJURY.

You will find the Pat traps and CVR's already plugged in. This is because they are isolated with a switch and GFI surge protector.

To turn on the Pat traps:

1. Open the hinged trap house roof. Turn **ON** forward most light switch (RED) to send power to the machine circuit.
2. Note the silver electrical box below or behind the light switches. Turn **ON** (up) the rear "run" switch and hear the hydraulic pump begin operation. The machine will not cock or oscillate at this time.

DO NOT PLACE TARGET BOXES IN THE BLUE TRASH CANS

3. **STANDING EITHER IN THE HOUSE AND BEHIND THE MACHINE OR TO THE RIGHT SIDE OF THE HOUSE**, turn the forward toggle switch (silver electrical box) to the **ON** (up) position. At this time the machine will cock and it should begin a short oscillation period and then stop. The machine is ready to throw birds.

The Club offers two versions of Pat traps. One version is the standard model (three machines) and the other is a wobble trap. Other than the vertical adjustment, both traps are identical.

- A. **Adjusting the height (bird flight) on the standard Pat: DECOCK THE MACHINE BY TURNING OFF THE FORWARD MOST TOGGLE SWITCH AFTER YOU ARE OUT OF THE WAY OF THE MACHINE'S ARM AND TARGET FLIGHT.** Kneel in front of the machine and put upward and backward pressure on the target carousel. Grasp the ratcheted lever below the target table and move the machine up or down according to your need. **BE CAREFUL. THE LOADED CAROUSEL IS VERY HEAVY.**
- B. **Adjusting the height (bird flight) on the Wobble Pat: MAKING SURE YOU ARE SAFELY BEHIND THE MACHINE**, locate the machine's control panel on the right rear of the machine. Turn the oscillate switch to "**Manual**." With the wobble switch in the manual position, note the buttons labeled "up" and "down." Adjust trap according to your need. Note the machine must be running and cocked to make vertical adjustments to the wobble ONLY machine.
- C. You may turn the **wobble** switch to automatic and the machine will raise and lower randomly.
Oscillation: You may adjust the oscillation (on or off) on either machine using the same procedure.
- D. **MAKING SURE YOU ARE SAFELY BEHIND THE MACHINE**, turn the forward most toggle switch on the wall to the **ON** (up) position and the machine will cock and begin oscillation. Locate the machine's control panel on the right rear of the machine. Turn the oscillate switch to '**Manual**.' Locate the "**left**" and "**right**"

MID-CAROLINA GUN CLUB Rules and Safety Manual

buttons and set the machine to a preferred angle. The machine will stay locked in that position until the oscillation switch is placed back in “auto” mode.

E. **ANGLE WIDTH (FLIGHT ANGLES) MAY BE ADJUSTED BUT MUST NOT BE ATTEMPTED WITHOUT A TRAINED MEMBER PRESENT.**

Target Speed/Distance: **WITH THE MACHINE IN THE DECOCKED POSITION**, note the hand crank on the front right side of the machine. **Unwind** to slow target speed; **wind-up** to increase target speed. Note: Once the crank exhibits no resistance whilst unwinding, do not proceed further as the machine is now at its minimum target speed settings. If for any reason you adjust the speed upward, always return it to the speed at which you found it.

Singles to Doubles: All Pat Traps are designed to throw singles or doubles. To convert the machine from singles to doubles, please follow this procedure:

- A. **MAKE CERTAIN THE MACHINE IS DECOCKED.**
- B. Add about 5-6 turns ON to the mainspring using the hand crank mentioned above. Doubles target should fall short of the stakes 2-4 yards. Please ask for assistance in this procedure until you become familiar.
- C. Note a target roller on the left rear of the machine at the target carousel. In the singles mode, the roller is in the DOWN position. To throw doubles, move the roller to the UP position.
- D. With the machine ON and COCKED, turn the Oscillation switch to Manual. Using the Red LEFT or Right buttons, move machine to center to doubles pair on the field. **STAY CLEAR OF THE ARC OF THE COCKED THROWING ARM.**
- E. Raise the elevation of the targets to suit referring to the instructions above on adjusting the height (bird flight) on the standard Pat or adjusting the height (bird flight) on the Wobble Pat.
- F. Reverse the previous procedure to convert back to singles.

SHUTDOWN PROCEDURE:

To shut down any model Pat trap, FIRST MAKE SURE YOU ARE CLEAR OF THE TARGET PATH.

- A. RAISE THE HINGED TRAP HOUSE ROOF AND **REACH IN AND TURN OFF (DOWN) THE FORWARD MOST TOGGLE SWITCH ON THE WALL (SILVER ELECTRICAL BOX) TO DECOCK THE MACHINE.** The machine will fire a target and stop oscillation (if it has not already done so). It is now safe to enter the trap house.
- B. Turn **OFF** (down) the rear toggle switch (silver electrical box) and note the pump stops operation.
- C. Turn **OFF** both front light switches to de-power the machine's power circuit.
- D. Refill machine with targets **GENTLY** (handle like eggs!) Make certain all CVR components are back in place and secure the hinged lid. The machine is now properly shutdown.
- E. Turn **OFF** (RED) light switch.
- F. Remove all trash to the BURN PILE; sweep house if necessary.

MID-CAROLINA GUN CLUB
Rules and Safety Manual

CANTERBURY VOICE CALL SYSTEM (CVC)

Trap Only

The CVC's consist of the following components:

1. Microphones (5), coax cable attached
2. Master On/Off switch and manual pull cord
3. Control Box, coax cable attached
4. Relay Box

SET-UP PROCEDURE

Note: It is impossible to hook-up the CVC's incorrectly because any plug will fit any receptacle with the like number of prongs.

1. The CVC will be located in the trap house of the field ON WHICH it is designated to be used. Do not remove it from that field.
2. The RELAY BOX remains in the trap house. It is connected to the trap machine with a Winchester style plug (LEAVE CONNECTED). The RELAY BOX is connected to the CONTROL BOX via coax cable. ALWAYS leave these two boxes CONNECTED.
3. The CVC gets its power by PLUGGING IN the RELAY BOX to the wall receptacle.
4. Uncoil the coax cable from around the CONTROL BOX as you proceed from the trap house to the shooting stations. Place the control box in the middle of the field on the grass just in front of the shooting stations.
5. Retrieve the MANUAL PULL CORD WITH ON/OFF SWITCH and FIVE (5) MICROPHONE STANDS from the trap house and take them to the shooting stations. NOTE: If you are by yourself or even just two of you, you may consider hooking up just one (1) or two (2) microphone(s) and moving it about with you.
6. Connect all the MICROPHONES AND PULL CORD TO THE CONTROL BOX. NOTE: MICROPHONE CONNECTION IS RANDOM (any two [2] prong connector in any slot); PULL CORD CONNECTION WILL FIT THE ONLY FOUR (4) HOLE CONNECTOR. Place the microphones on the grass (singles/doubles shooting) about 2-3 feet in front of, and to the left of the shooting position (right handed shooters). A microphone with a red tape band is designed to go in the middle position because it has a shorter cord (two [2] sets of CVC's have these, two [2] don't).
7. Turn power ON at PULL CORD MASTER SWITCH. LED should glow RED.

You are ready to call for targets.

NOTE: The CVC power will AUTOMATICALLY TURN OFF AFTER TWO (2) MINUTES OF INACTIVITY. RECYCLE THE MASTER SWITCH TO TURN THE CVC ON. Targets will be thrown REGARDLESS OF MASTER SWITCH POSITION when the RED MANUAL BUTTON is depressed.

1. Turn CVC OFF BEFORE going to the trap house for any reason. CVC OPERATION:
2. In the on position, the CVC will throw bird(s) on any reasonable volume call from any microphone. You do not have to shout to get a bird.
3. If the unit does not throw a bird (or gives a slow pull) on command, check the following:

MID-CAROLINA GUN CLUB
Rules and Safety Manual

1. Make certain the MASTER SWITCH is in the ON POSITION and the LED is illuminated.
2. Make certain all connections are secure and tight.
3. Make sure no part of your body is obstructing the sound of your call. Place the microphones about 2-3 feet in front and to the left of a right-handed shooter. Reverse the placement for a left-handed shooter.
4. **Do not call too soon after the shooter before you.**
 - a. **The trap machines require about 1.7 seconds to cycle after a throw.**
 - b. **The CVC is set to respond to that cycle time and will not activate.**
 - c. **Take the gun down, remount and call again.**

A round of trap at MCGC is 25 targets. It's easy to shoot a few extras and feel like 'nobody gets hurt.' Remember, MCGC charges a minimal amount per round—perhaps less than a quarter of many other shooting facilities.

PLEASE RESPECT YOUR CLUB

5. A slow pull will result from calling just a bit too soon and the voice call picking-up the end of your call as the trap machine comes out of its cycle time. Please understand that normal talking on the line will throw birds. Be aware of this and turn the unit off or step away from the line to talk. Targets cost money!

SHUT-DOWN PROCEDURE

The CVC's are water resistant. However, make certain the control box is off the ground and not in a puddle. Wipe off all components after being wet before putting away.

1. **Make certain the trap house is in the SAFE CONDITION. REACH IN AND TURN OFF (DOWN) THE FORWARD MOST TOGGLE SWITCH ON THE WALL (SILVER ELECTRICAL BOX) TO DECOCK THE MACHINE.**
2. REVERSE the foregoing procedure. Be sure to ALWAYS UNPLUG THE RELAY BOX AND THE TRAP MACHINE BEFORE LEAVING.
3. **WHEN COILING THE CVR CABLES, DO SO LOOSELY AS CORDS COILED TOO TIGHTLY WILL DAMAGE THE CONDUCTORS.**

MID-CAROLINA GUN CLUB
Rules and Safety Manual

TOURNAMENT INSTRUCTIONS FOR CANTERBURY VOICE CALL SYSTEM

Note: Please keep master switch OFF any time shooters are not in the shooting position or shooting is interrupted.

- When squad takes firing position and squad leader/or lead-off shooter calls for a bird to look at, pull that bird manually with red button. Keep master switch OFF until squad leader is ready to shoot, and starts to mount his gun then turn master switch ON.
- After the fifth/or last shooter has shot his fifth shot on each station turn master switch OFF while shooters are changing positions, and turn back ON when the squad leader/or lead-off is ready to shoot next position.
- When squad has finished shooting turn master switch OFF.

Note: Anytime there is an interruption in shooting, or talking, please turn master switch OFF. Also master switch will turn off automatically in approximately two minutes when system is not in use. This system will only allow a bird to be thrown about every 1.9 - 2.3 seconds.

Pullers/Referees: You will need to learn how to position yourself and how loud to call, not to SETOFF VOICE RELEASE SYSTEM when calling birds LOST, DEAD PAIR, NO TARGET, etc. Each time the system is accidentally released it cost 12¢ for singles/handicap, and 24¢ for doubles. This is an added cost we have some control over. Your cooperation will be greatly appreciated.

DO NOT PLACE TARGET BOXES IN THE BLUE TRASH CANS

MID-CAROLINA GUN CLUB
Rules and Safety Manual

SPORTING CLAYS COURSE

CLUB REGULATIONS REQUIRE YOU TO RECEIVE AN OPERATIONS AND SAFETY BRIEFING FROM A DESIGNATED SAFETY OFFICER **AND SHOOT THE COURSE WITH AN EXPERIENCED MEMBER PRIOR TO OPERATING THE 5-STAND COURSE INDEPENDENTLY.**

CLAY TARGETS

- Targets are stored in the in the 'hub' and under the north tower.
- The Club stocks standard, rabbit and battue targets.
- **UNBROKEN TARGETS CAN BE THROWN AGAIN IN THE MANUAL TRAPS ONLY; PLEASE, PICK UP THESE UNBROKEN TARGETS.**
- **PLACE PICKED UP TARGETS UNDER THE TARGET HUB ENCLOSURE.**

HANDLE CLAY TARGETS LIKE EGGS!

The Sporting Clays course uses a combination of manual and automatic traps.

MANUAL TRAP: OPERATION GUIDELINES

COCKING MANUAL TRAPS

The Sporting Clays Course uses **Lincoln manual traps**. Lincoln Traps are $\frac{3}{4}$ cock traps. Be certain you are familiar with these units prior to operation. You should find the trap with the throwing arm pointing directly forward. Pull the throwing arm towards you (right to left) until it is has engaged the trip lever. You are now ready to place a target on the arm and begin shooting. **ALWAYS STAY AWAY FROM THE RIGHT SIDE OF THE ARM—AS SERIOUS INJURY COULD OCCUR IF YOU ARE STRUCK.**

DECOCKING MANUAL TRAPS

When done shooting, cock the manual traps one at a time. **Holding securely onto the throwing arm, trip the machine and hold the arm and let it rotate gently until it stops. It will be pointing directly away from you. The manual trap is now decocked and safe.**

MID-CAROLINA GUN CLUB
Rules and Safety Manual

TOWER: AUTOMATIC TRAP OPERATIONS

BE EXTREMELY CAREFUL WHEN CLIMBING THE TOWERS. BE SURE TO CLOSE THE DOORS ON ALL LEVELS. THE TOWERS ARE NOT JUNGLE-GYMS FOR CHILDREN. THE TOWERS CAN BE DANGEROUS IF USED IMPROPERLY OR BY THE UNSUPERVISED.

Both the North and South Towers utilize LaPorte 185 PC AUTOMATIC TRAPS. The LaPorte trap is simple to operate by using the switch box on the right side of the mounting platform.

START-UP PROCEDURE:

1. **Ensure the trap is not cocked before proceeding.**
2. Plug in power and control cords.
3. **NEVER STAND ON THE RIGHT SIDE OF, OR IN FRONT OF, ANY COCKED TRAP. SERIOUS INJURY WILL RESULT.**
4. **To turn trap on**, move three (3) position toggle switch from “Off” to “On.” Press pull cord button once to cock machine.

SHUTDOWN PROCEDURE:

1. **To turn the trap off**, **NEVER STAND ON THE RIGHT SIDE OF, OR IN FRONT OF, ANY COCKED TRAP. SERIOUS INJURY WILL RESULT**, **MOMENTARILY** push the 3 position toggle switch down to the “Decock” or “Release” position and release the switch. The switch is spring loaded to return to the “Off” position.
2. **UNPLUG POWER and CONTROL CORDS.**
3. Reload the six-column carousel with targets-**GENTLY**.

PROMATIC AUTOMATIC TRAPS

START-UP PROCEDURE:

1. **Ensure the trap is not cocked before proceeding**
2. Remove cover if applicable
3. Toggle switch to “**LOAD/COCK**”. The machine will cycle and load a target.
4. Targets are thrown using a cord with a push button release.

SHUTDOWN PROCEDURE:

1. Toggle switch to “**UNLOAD/DECOCK**” to release target and turn off machine.
2. **Reload** the trap filling to top of magazine—do not overfill.
3. Cover if applicable.
4. **IT IS THE RESPONSIBILITY OF MEMBERS TO RESUPPLY THE TARGET STORAGE AREAS WITH TARGETS—PLEASE DO YOUR PART.**

DO NOT PLACE TARGET BOXES IN THE BLUE TRASH CANS

MID-CAROLINA GUN CLUB
Rules and Safety Manual

5-STAND COURSE

CLUB REGULATIONS REQUIRE YOU TO RECEIVE AN OPERATIONS AND SAFETY BRIEFING FROM A DESIGNATED SAFETY OFFICER AND SHOOT THE COURSE WITH AN EXPERIENCED MEMBER PRIOR TO OPERATING THE 5-STAND COURSE INDEPENDENTLY.

A round of 5-stand at MCGC is 25 targets. It's easy to shoot a few extras and feel like nobody gets hurt. Remember MCGC charges a minimal amount per round – perhaps less than a quarter of many other shooting facilities.

PLEASE RESPECT YOUR CLUB

HANDLE CLAY TARGETS LIKE EGGS!

CLEAN UP AFTER YOURSELF AND OTHERS. IF NECESSARY, AFTER SHOOTING. This includes picking up all hulls and any trash. Do not place duds in trash cans – take them with you

The MCGC 5-stand consists of a multiple trap layout utilizing PROMATIC AUTOMATIC TRAPS. The machines are controlled by a wireless remote controller.

DO NOT SHOOT OUTSIDE THE CAGES – SHOT FALL COULD ENDANGER OTHER MEMBERS IN OTHER AREAS OF THE CLUB. NO SHOOTING IS ALLOWED FROM THE TOWER.

Please note the 5-stand traps are 12-volt models powered by deep cycle batteries connected to solar chargers. Please be careful not to damage any of these fragile components.

START-UP PROCEDURE:

1. The wireless controller is located in the 5-stand building.
 - a. The controller will be plugged into its charger – Please return it and plug it in after shooting!
2. Trap Start up Procedure
 - a. Ensure that the trap is not cocked before proceeding.
 - b. REMOVE RAIN BARRELS
 - c. Each trap has a switch box attached to a cord or mounted on or near the machine.
 - d. Move switch to “Load/Cock” position – the machine will cycle and load a target.
 - e. Targets are thrown using the wireless controller described in #1.
3. Controller operation
 - a. Press the “on” button and select “Manual” control option
 - b. SINGLE TARGETS
 - i. There are ten (10) wireless receivers on the 5-stand course.
 1. The key pad is numbered 0 – 9.
 2. Press any pad (1-9) and the corresponding trap will throw one target.
 3. Press 010 for machine #10 to throw a target.

MID-CAROLINA GUN CLUB
Rules and Safety Manual

c. REPORT DOUBLES

- i. Press any pad (1-9, 010) as above for a single target
- ii. Immediately after the first target is fired-on press any pad (1-9, 010) for the 2nd target.

d. TRUE DOUBLES

- i. Press the “true pair” pad
- ii. Press the two trap numbers desired (remember press 010 for #10)
- iii. Press the “true pair” pad again to fire both selected targets.

CLOSING THE 5-STAND COURSE

1. Make certain that all firearms are unloaded and racked.
2. Pick up all hulls – ones not wanted are to be placed in the white tubs.
 - a. Magnets, rakes and brooms are provided to help cleanup.
 - b. Place trash in blue barrels (no target boxes!)
3. Down range and at the tower the trap machines need to be decocked, reloaded and covered.
 - a. From behind each trap you need to make sure no one is in range of the trap.
 - b. Call loudly “Clear” then release the trap by toggling “release/decock” switch.
 - c. Reload the traps taking targets from the adjacent yellow & black storage boxes.
 - d. Note: The 5-stand group is responsible for maintaining an appropriated quantity of targets in these boxes and a quantity of full boxes of targets in the 5-stand building.
 - e. Cover all traps.
4. Return controller to 5-stand building and plug it into it’s charger.
5. Un-broken targets are not to be loaded into these automatic clay traps. Unbroken standard and battue targets can be used in the sporting clays hand traps. Please take these used targets to the “Hub” storage area at the sporting clays.
6. Please clean up and pickup trash & hulls. Empty target boxes are to be taken to the “burn pit”. Do not put in “blue barrels”.
7. Fill out a Payment Chit and place in the Drop Box.

Note: Spare batteries will be found in the shack on a charger should a particular trap fail to fire. Please check and make certain the solar charger leads have not been knocked loose on any of the batteries.

DO NOT PLACE TARGET BOXES IN THE BLUE TRASH CANS

MID-CAROLINA GUN CLUB
Rules and Safety Manual

This page left blank intentionally

SAFETY BRIEFING CERTIFICATION

I, (print name) _____, acknowledge I have received instruction in the following areas on the date executed below from the designated Range Safety Officer (RSO) of the Club as a condition of membership:

- () Firearms Safety
- () Club Rules, Policies and Procedures
- () Safety Protocols
- () Equipment, Facility Operation

And I further assert that:

- a. I fully understand the training received;
- b. I understand that additional training is available at any time upon my request;
- c. I will hold the Club harmless in the event of any injury, death and/or damage or theft of or to my personal property either at or on the way to or from the Club;
- d. I am empowered and agree to call an immediate ceasefire for any violations of The Rules of the Club that I may witness;
- e. I will report all such violations to club officials as soon as possible;
- f. I will contact the appropriate venue manager for additional training prior to using any of the shotgun venues without other experienced members;
- g. I have received a copy of the By-laws of Mid-Carolina Gun Club, and
- h. All questions I have regarding the Club and its procedures have been fully addressed to my satisfaction.

I acknowledge I fully understand and agree to the foregoing terms and conditions for use of the Club on this the _____ day of _____, 20_____.

Member Signature

Range Safety Officer (Print)

Range Safety Officer Signature

Gate Access Card _____ Issued.